

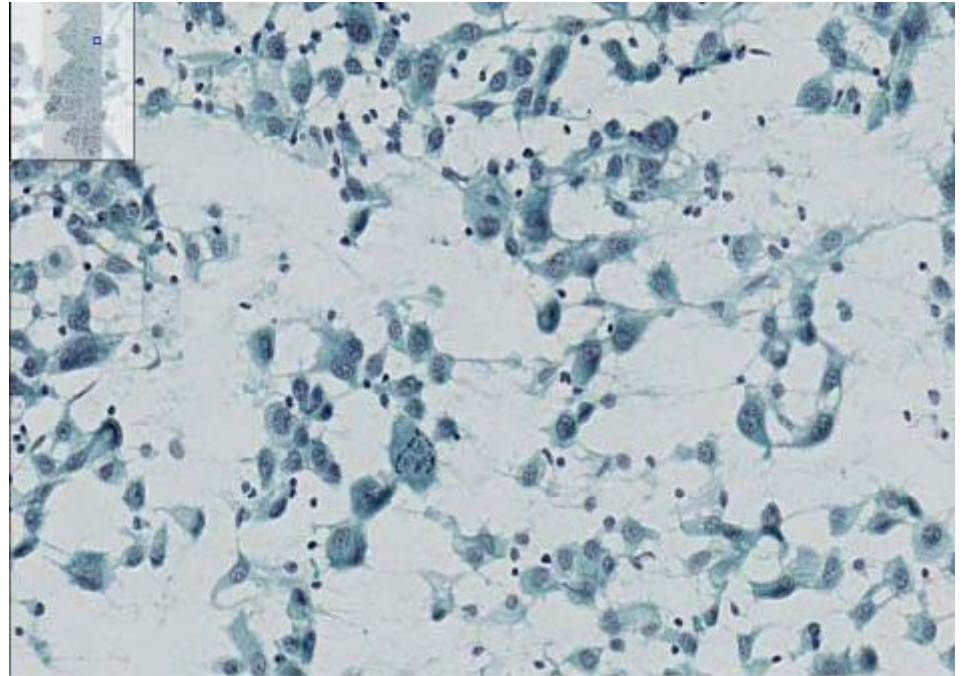
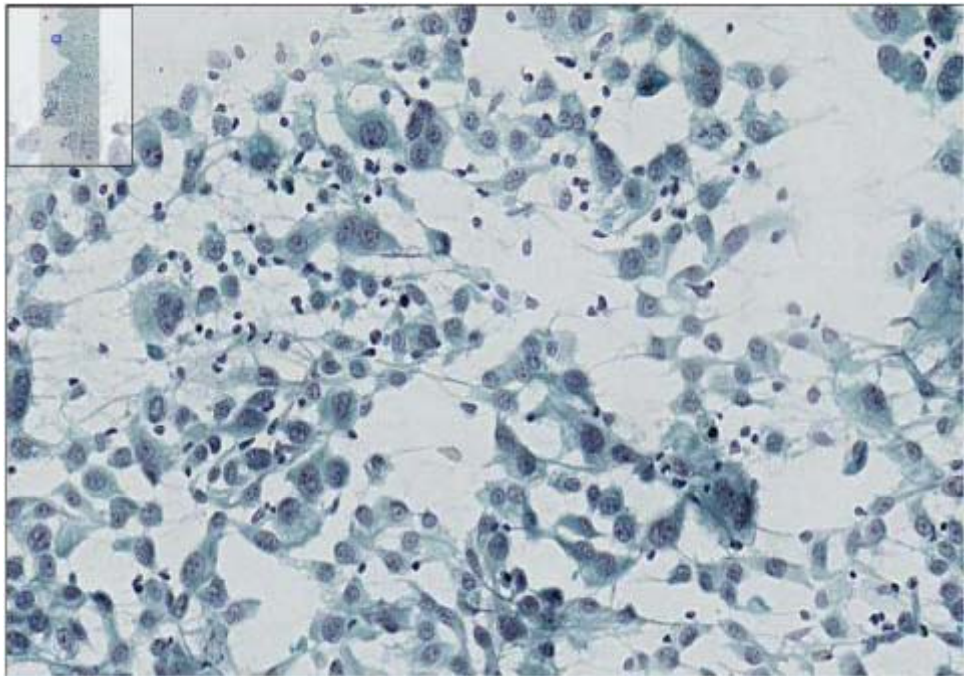
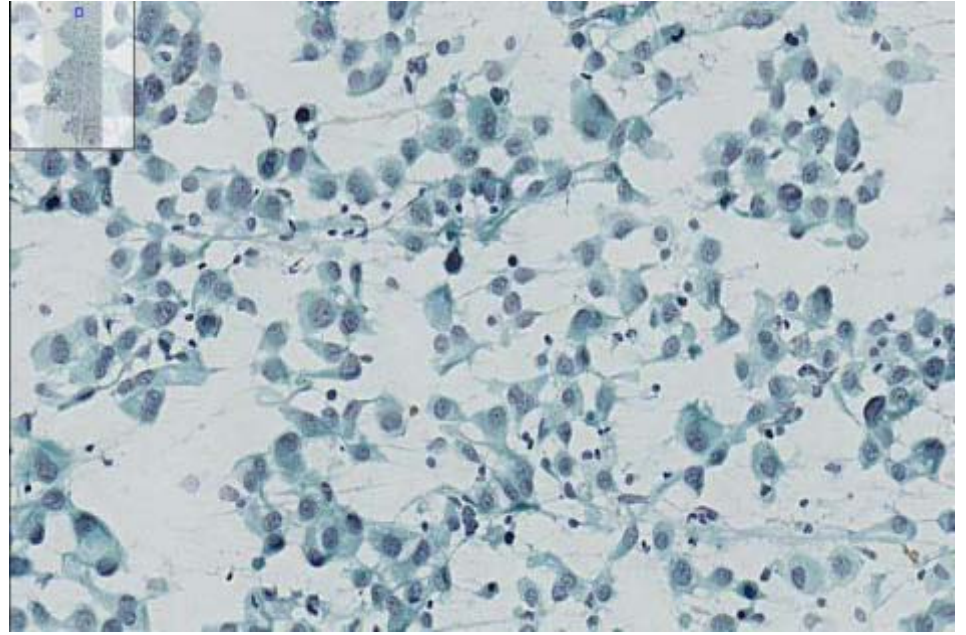
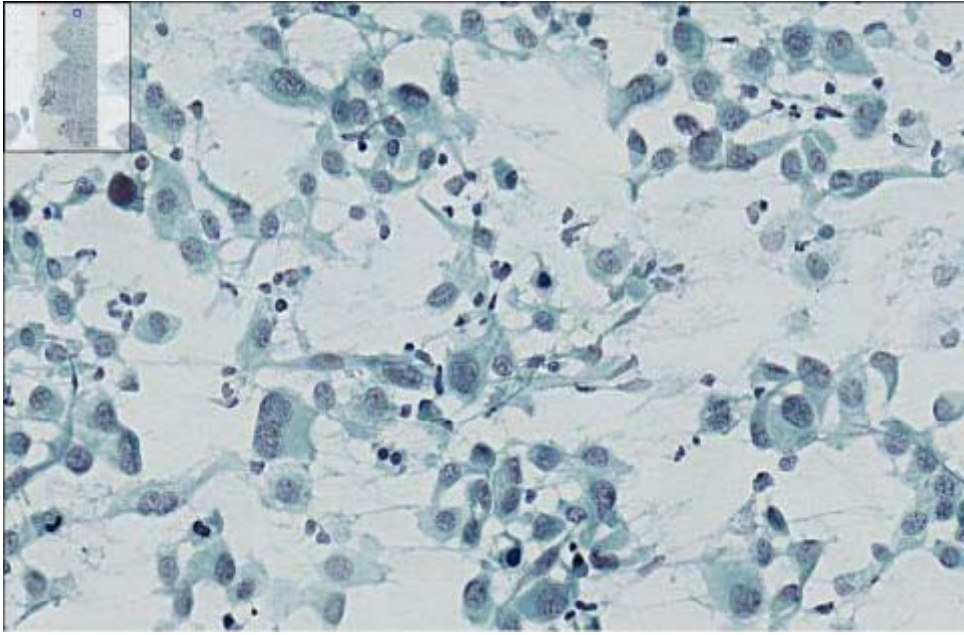
回答（肺癌）

宮城県立がんセンター 臨床検査技術部

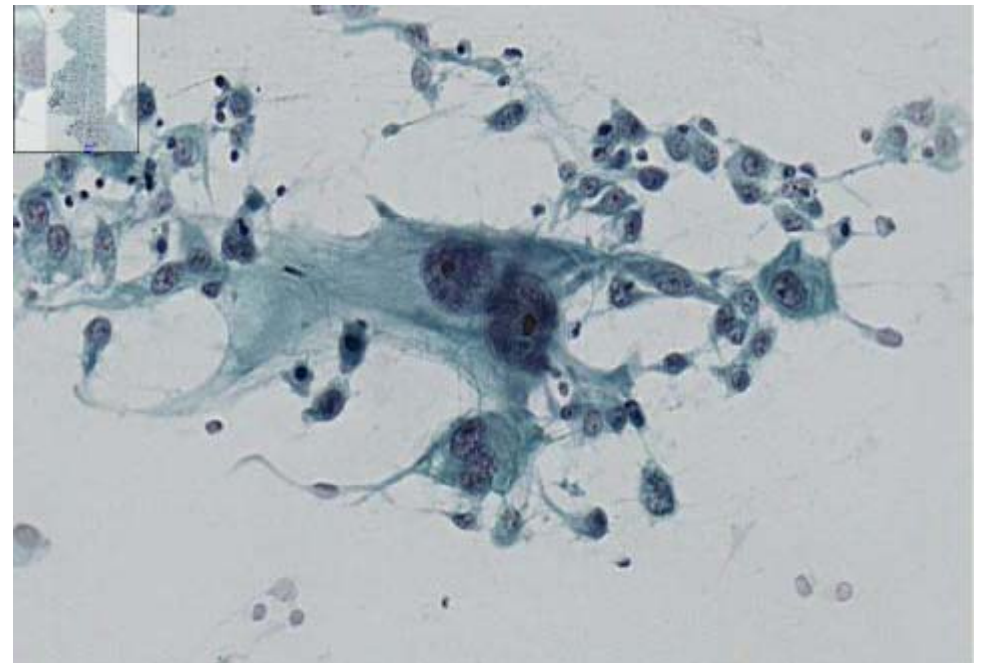
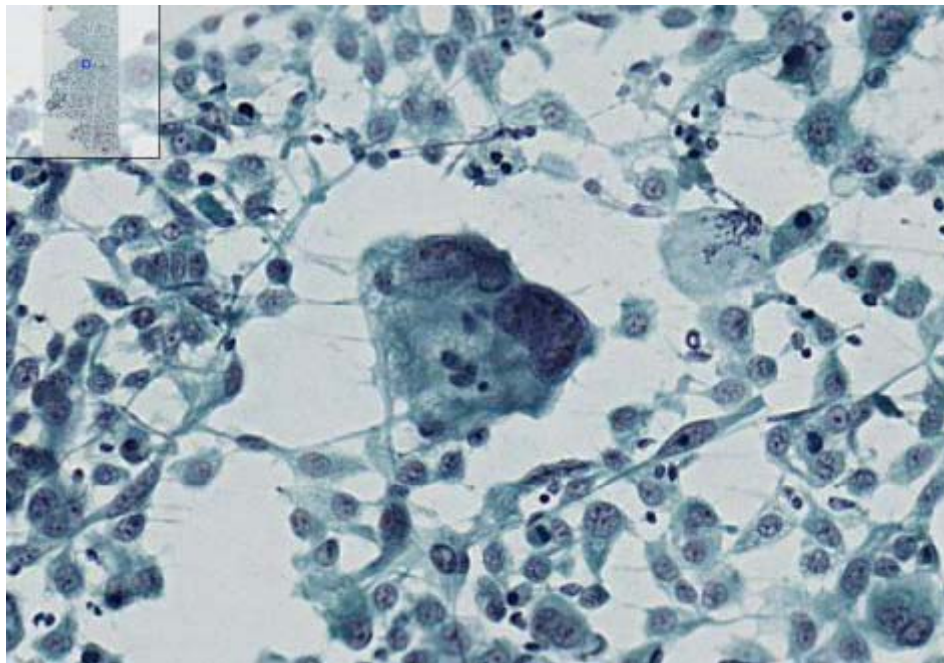
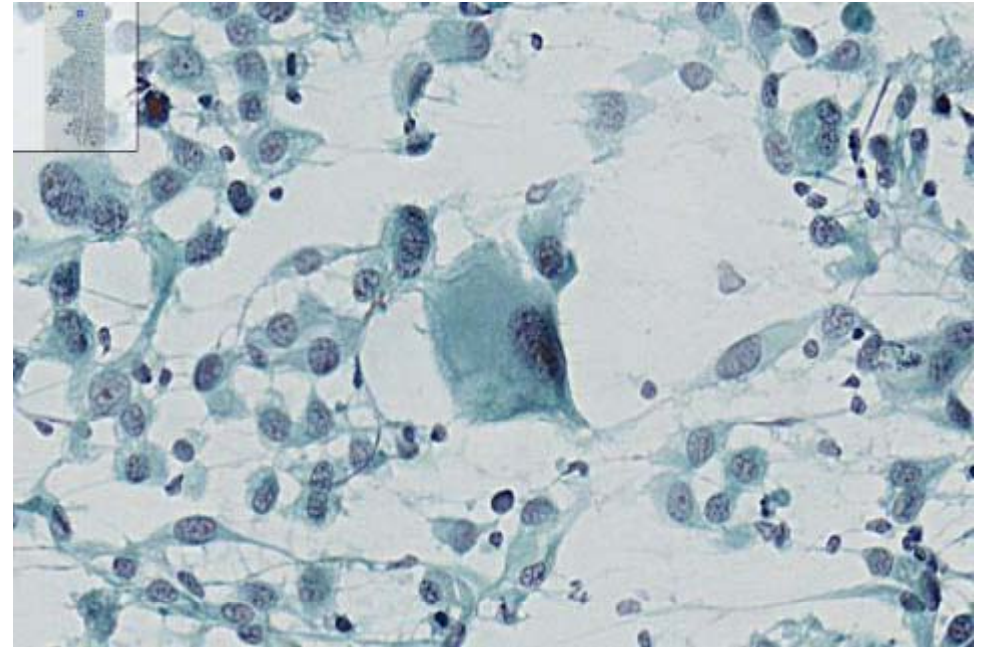
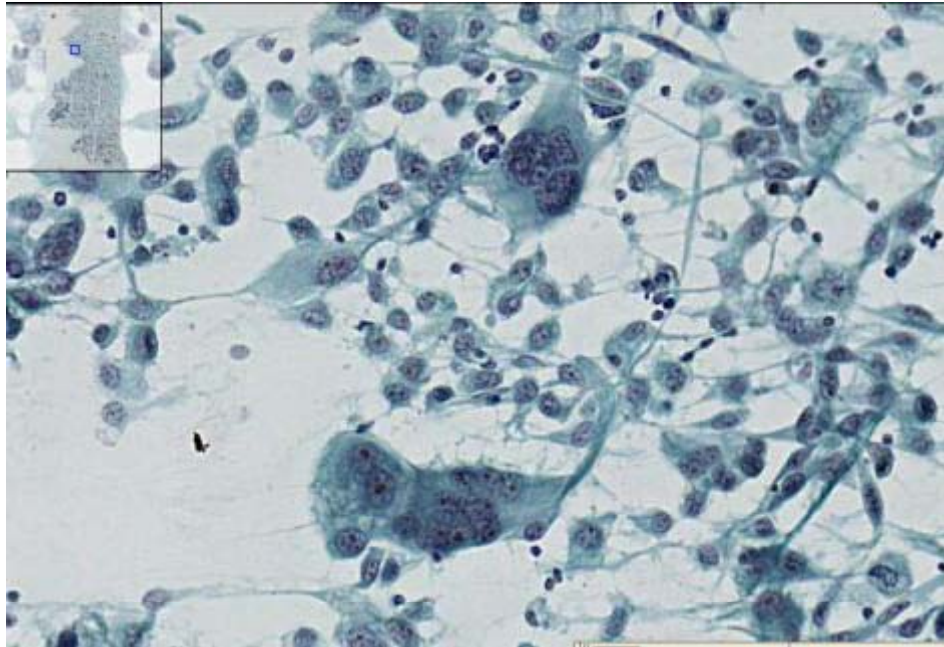
東北大学大学院医学系研究科がん分子制御学分野

加藤 浩之

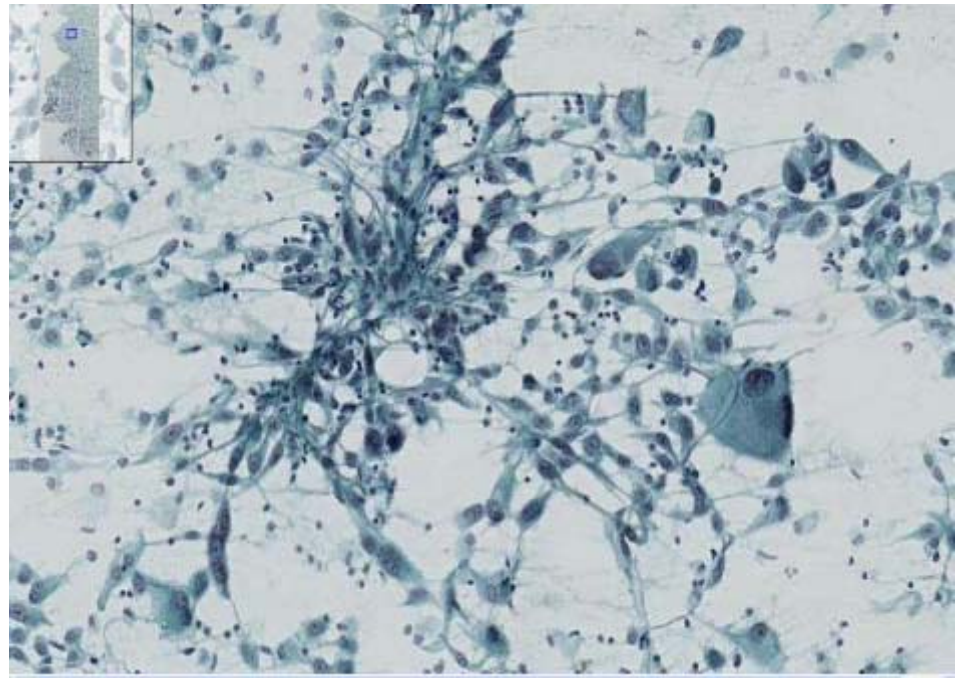
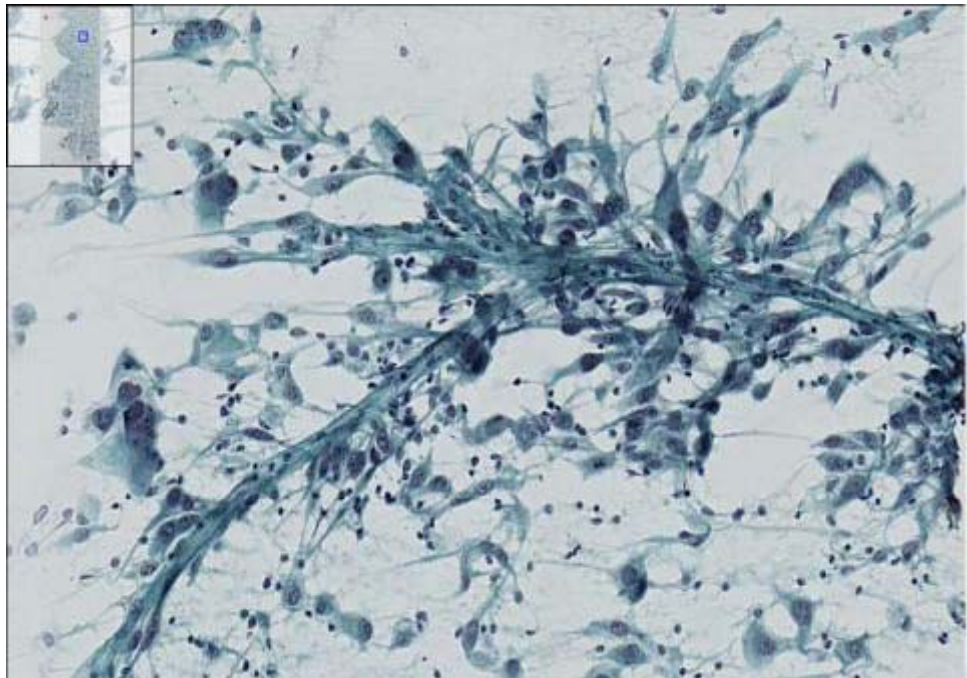
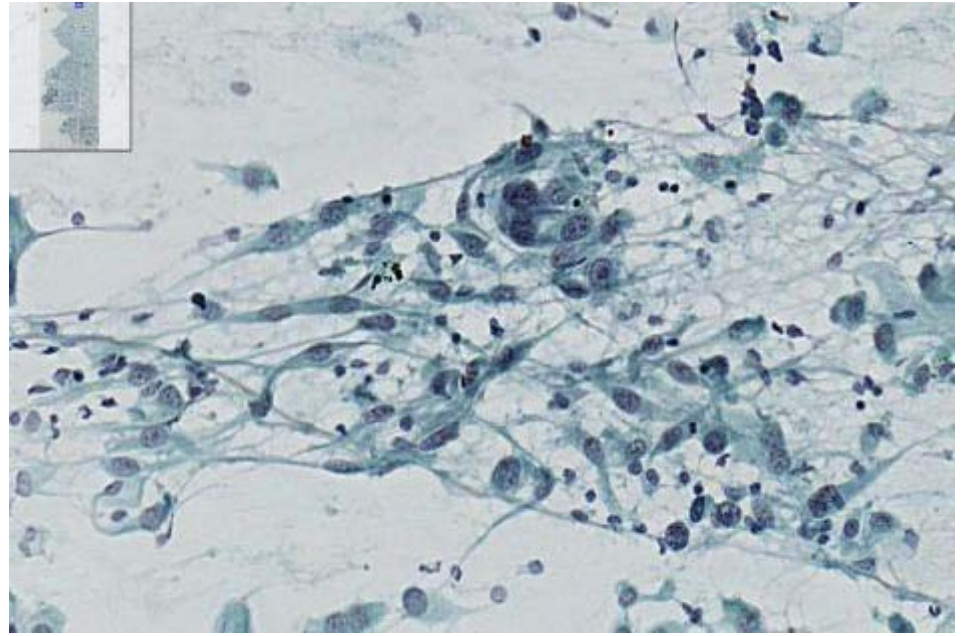
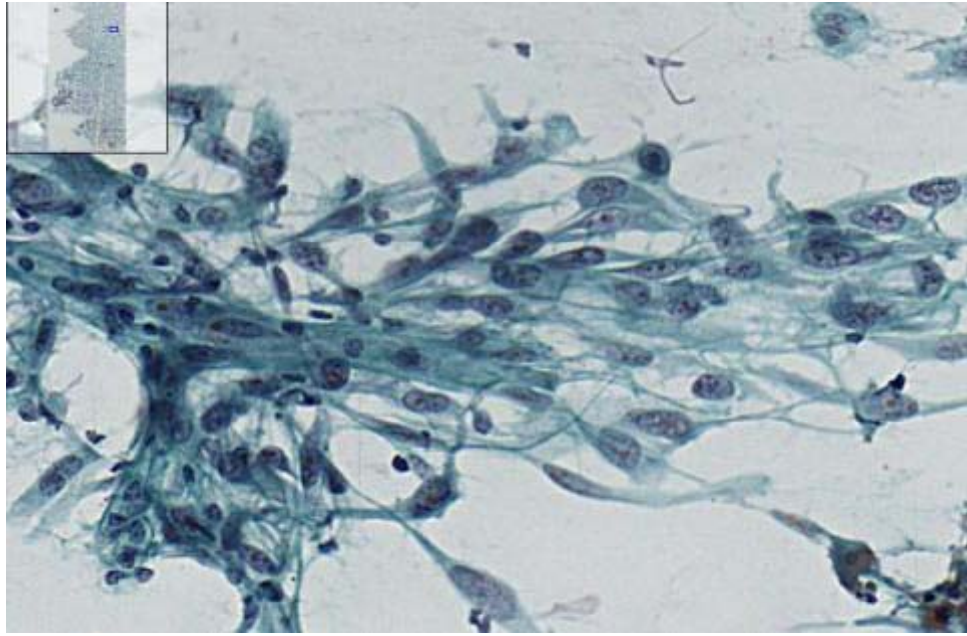
腺癌



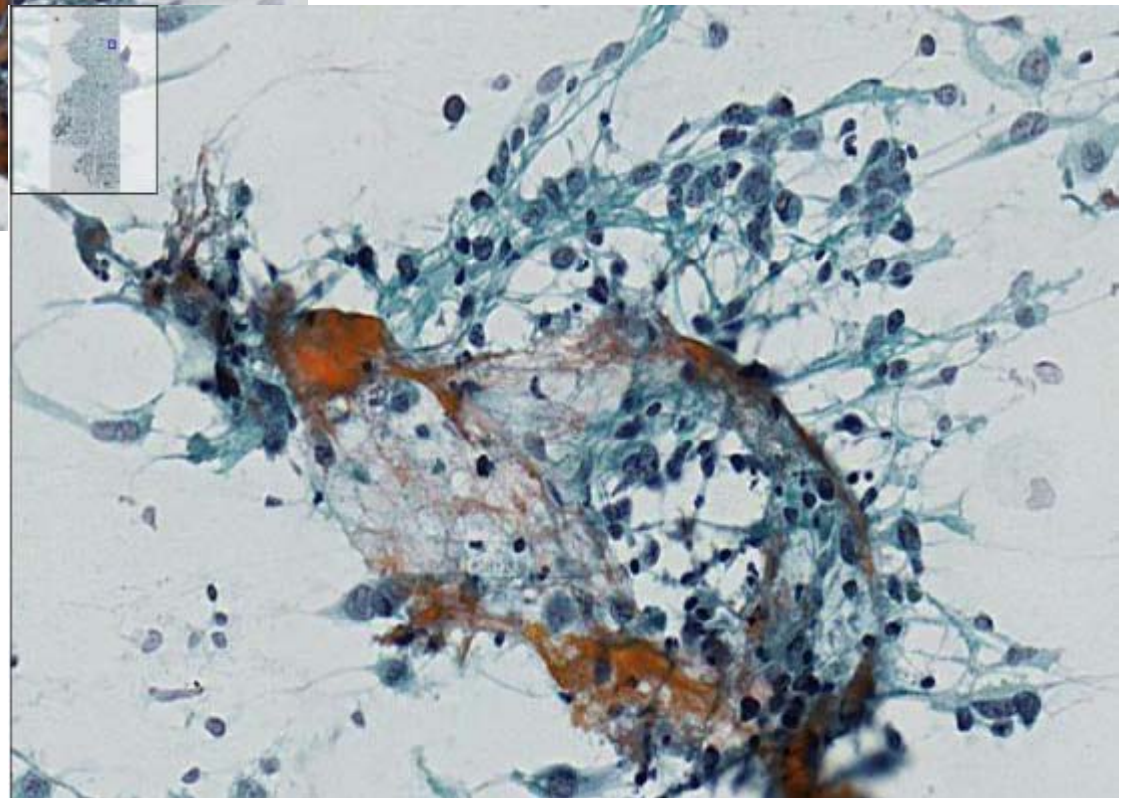
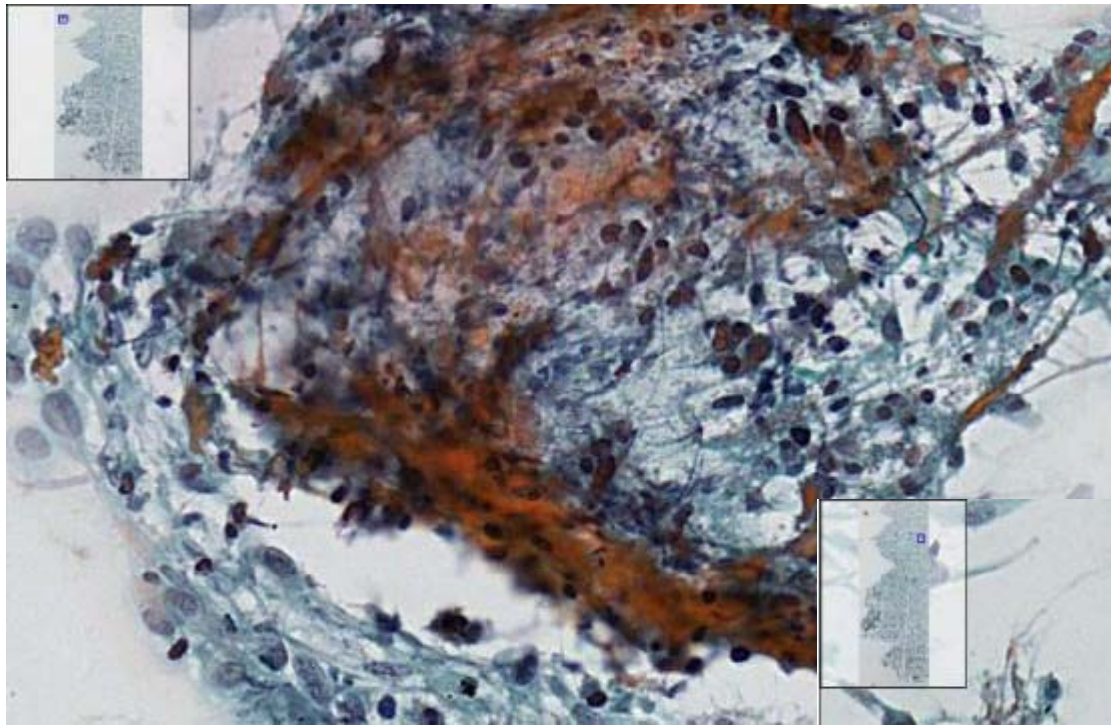
巨細胞癌



紡錘細胞癌

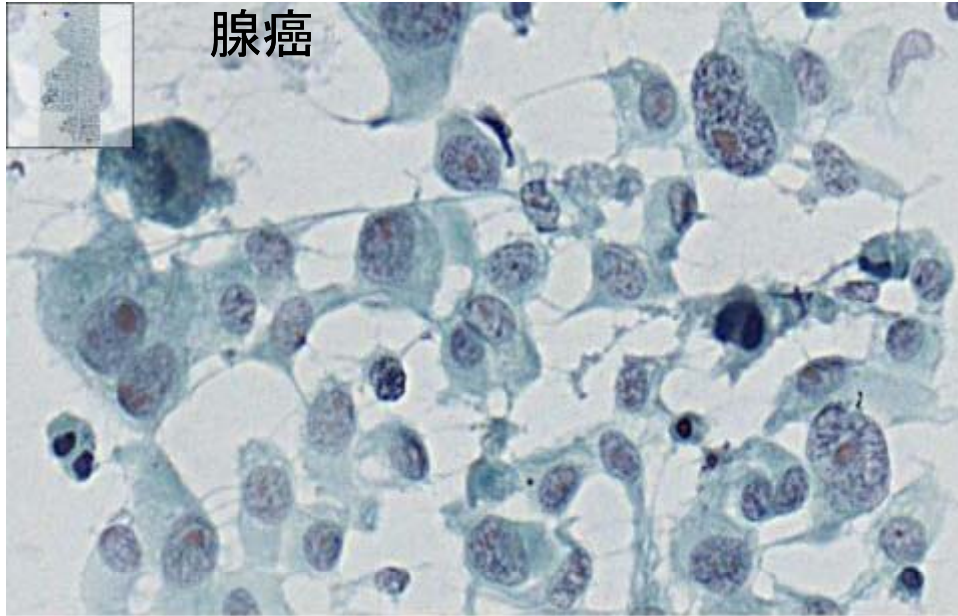


扁平上皮癌

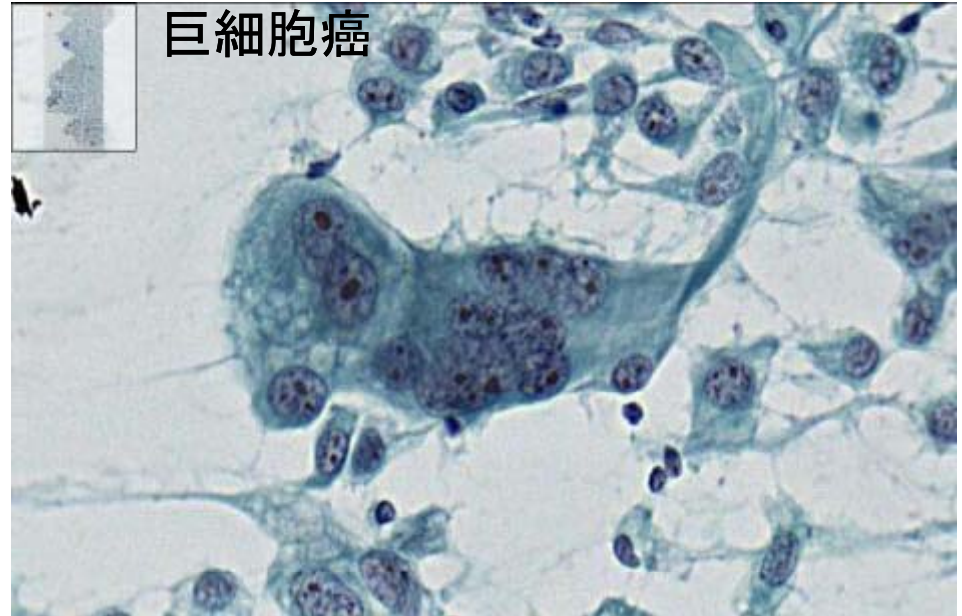


強拡大像

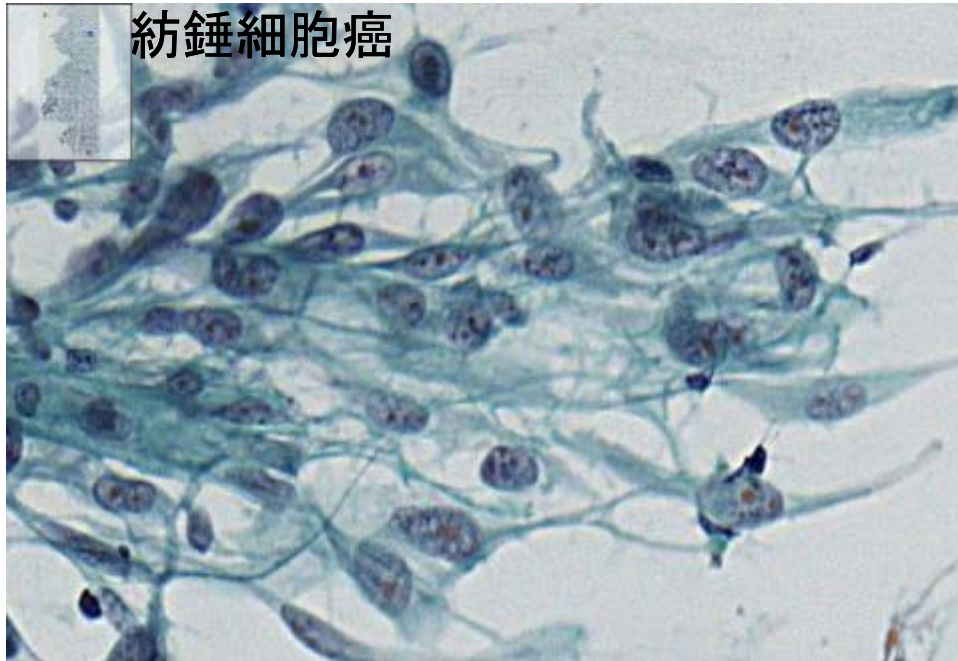
腺癌



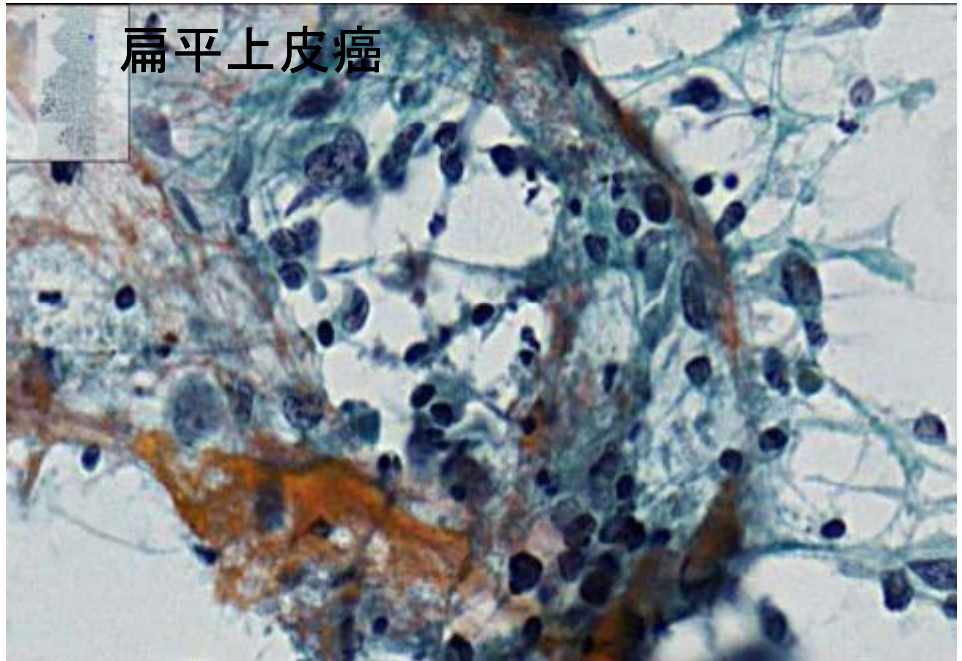
巨細胞癌

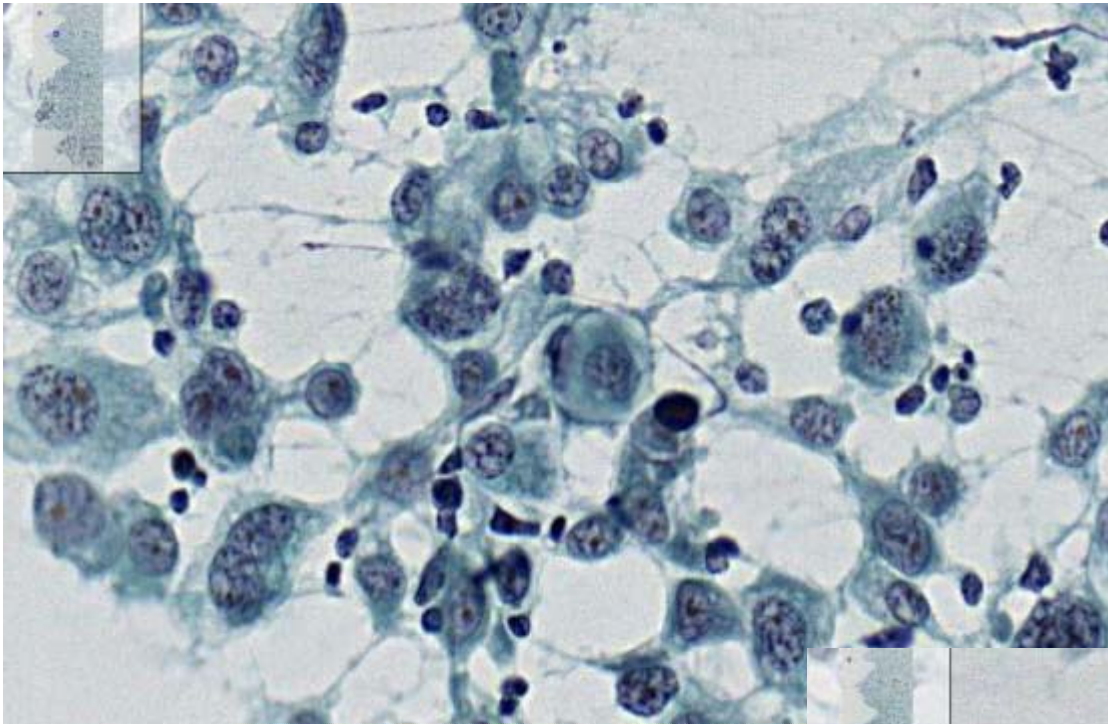


紡錘細胞癌



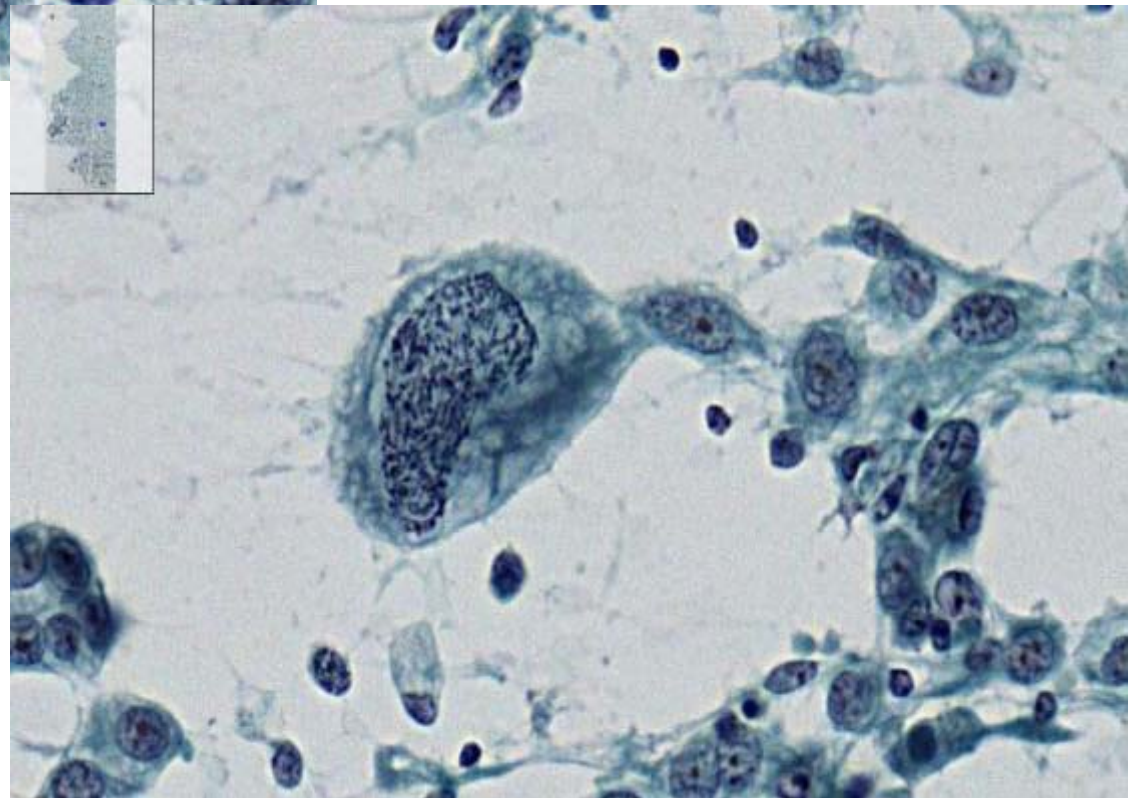
扁平上皮癌





細胞相互封入像

核分裂像



選折肢

- 1 多形癌
- 2 非角化型扁平上皮癌
- 3 腺癌
- 4 大細胞神經內分泌癌
- 5 平滑肌肉腫

回答(肺癌)

多形癌